



# techsystem

automatyka klimatyzacja wentylacja

▸ zapoznaj się z naszą ofertą

**VA-747x Series**  
**Electronic Terminal Unit Valve Actuator**

Installation Guide

Part No. 14-88400-17 Rev. -  
 Issued 11 2007

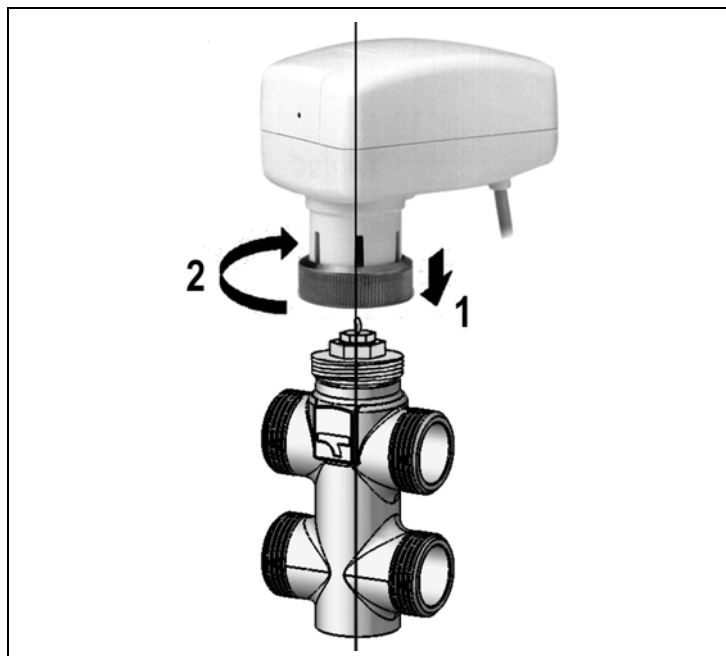


Figure 2: Mounting actuator on the valve

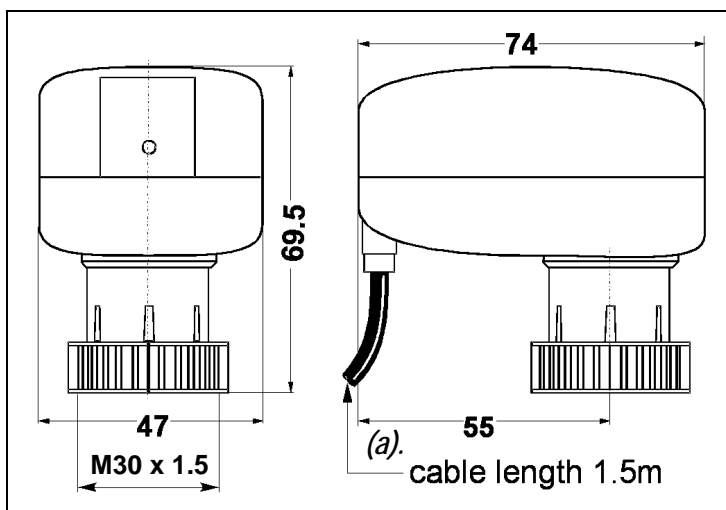


Figure 1: Dimensions in mm

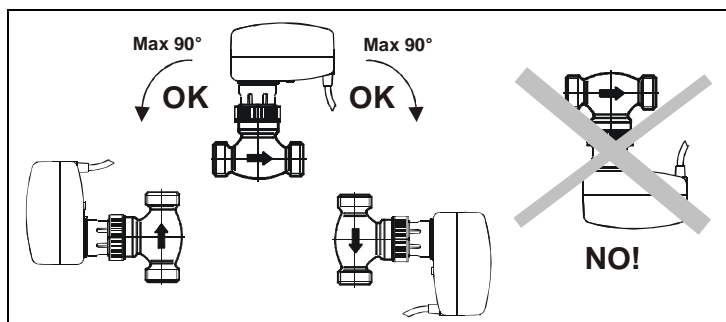


Figure 3: Mounting Positions

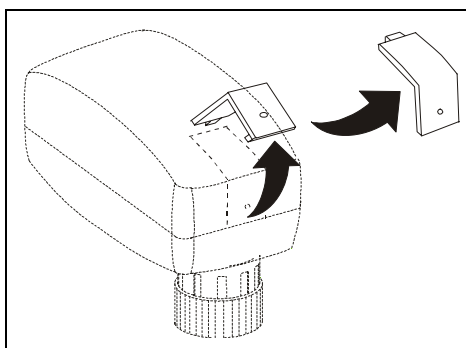


Figure 4: Cover for jumper selection

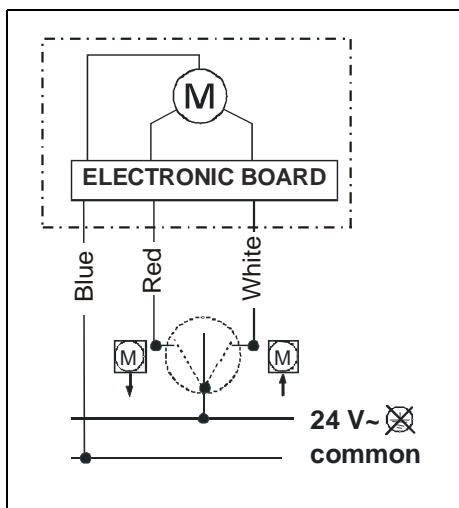


Figure 5: VA-7470-1001  
 Floating Model Wiring

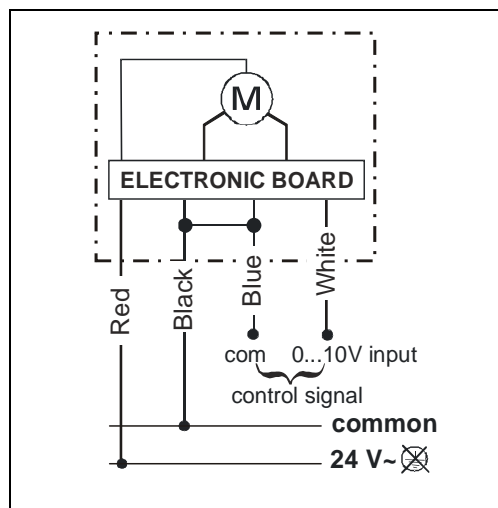


Figure 6: VA-7472-1001 and VA-7472-9001  
 Proportional Models Wirings

**READ THIS INSTRUCTION SHEET AND THE SAFETY WARNINGS CAREFULLY BEFORE INSTALLING AND SAVE IT FOR FUTURE USE**

**General Features**

The VA-747x Series provides floating or proportional control in HVAC applications.

This actuator is designed for field mounting onto VG6000 terminal unit valves.

**Figure 1: Dimensions in mm**  
(a). Cable length 1.5 m

**Mounting**

**Figure 2: Mounting actuator on the valve**

**Figure 3: Mounting positions**

**Installation and Adjustment**

**Figure 4: Cover for jumper selection**

Remove this cover for jumper selection  
(removable only for VA-7472-9001 models)

**IMPORTANT:** the actuator stem is in completely up position from the factory. If the actuator is powered when not mounted on the valve, be sure to return the spindle to completely up position before mounting onto the valve.

**Wiring**

**WARNING:** The electrical connections for the actuators must be executed in accordance with the relevant legal requirements. In order to avoid any personal injury or damage to the equipment or other property, always isolate the power supply before commencing any work on the electrical wiring. In order to avoid danger to property, it is important for the equipment to be used solely for which it is intended.

**Wiring Diagrams**

**WARNING:** The integrated circuits in the actuator are sensitive to static electricity. Take suitable precautions.

**Figure 5: VA-7470-1001 Floating Model Wiring**

**Figure 6: VA-7472-1001 and VA-7472-9001 Proportional Models Wirings**

**IMPORTANT:** Use the Actuator only to control equipment under normal operating conditions. Where failure or malfunction of the electric actuator could lead to personal injury or property damage to the controlled equipment or other property, additional precautions must be designed into the control system. Incorporate and maintain other devices such as supervisory or alarm system or safety or limit controls intended to warn of, or protect against, failure or malfunction on the electric actuator.

**Led Indication**

	<b>On</b>	Power line present
	<b>Off</b>	Power line not present
	<b>Double Blinking</b>	Actuator performs an end-of-stroke confirmation cycle or an anti-sticking cycle
	<b>Blinking</b>	The motor is running

After 2 minutes the motor is running, an internal timer switches off the motor. When the signal is 0% or 100%, the timer switches on the motor every 2 hours for 2 minutes, in the signal direction.

**Anti-sticking cycle (only VA-7472 models)**

Every 24 hours, the actuator runs one complete cycle up and down and returns to the control position.

**Check out procedure**

Before leaving the installation observe at least three complete operating cycles to be sure that all components are functioning correctly. If not, contact your supplier.

**Autozero cycle (only on VA-7472 models)**

Each time the power is switched on, the actuator performs one complete stroke time down and after that it reaches the control position.

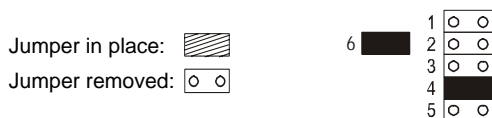
**Repair and replacement**

Field repair is not possible. If the actuator is not working properly and all wiring is correct, the actuator should be replaced. Please check with your nearest supplier.

**Adjustments (jumper settings) of proportional models**

VA-7472-9001 is configurable.

This is how the jumpers are positioned on the board:



Function	Jumper No.	VA-7472-9001 (adjustable)	
		Factory setting	Alternative setting
Anti-sticking	1	enabled	disabled
Input control signal	2	0...10 V	5...10 V  0...5 V
	3		
No Function	4	No function	---
Action	5	Direct (DA)	Reverse (RA)
No Function	6	No function	---