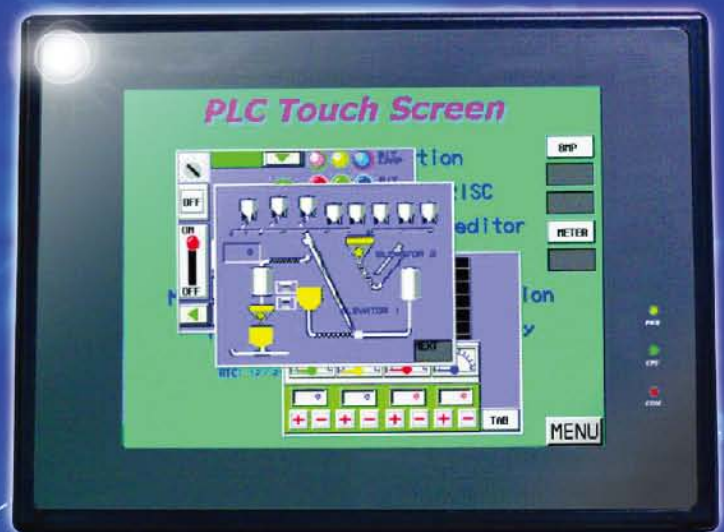




Human Machine Interface

WEINTEK
MT500
Touch Screen for Industrial
Applications



<http://www.weintek.com>

BRIEF INTRODUCTION OF COMPANY

ISO 9001:2000 CERTIFIED COMPANY



Since the foundation of the company in October of 1995, Weintek Labs., Inc. has been committing itself to being a leading-edge designer and manufacturer of graphic operator interfaces, also known as HMIs (Human Machine Interfaces), in Taiwan. We took our rich experience as HMI specialists and set the HMI product's standard with state-of-the-art technology, efficient manufacturing, conscientious and careful testing, and global specialized support. The company's missions are to provide its customers with quality products and superior service as well as to share the fruits of its good teamwork with all of its employees, by which we are able to achieve the goals of establishing a reputation as a leading brand in the industry and ensuring sustainability of the enterprise's operation and development.

Weintek regards its provision of quality products and superior service as the top priority, because we strongly believe that customer satisfaction is the company's greatest asset; therefore, to ensure fulfillment of customer satisfaction, we have conducted a well-integrated quality control system, equipped our labs and works with advanced instruments and facilities, and standardized operating procedures to efficiently monitor every link in the entire system of production and operation. Since 2004, the company's quality management system has been registered to ISO 9001:2000 through the strictest assessment and certification of SGS United Kingdom Ltd., a leading and reliable certifying company in the world.

“Professional Supplier, Quality Products, Innovative R&D, and Customer Satisfaction” are Weintek's principles. To fulfill these principles, the company has been dedicating itself to R&D and manufacture of HMI products and partnering worldwide professional companies to promote and market the products. The collaboration of manufacturer and distributor is making a turning point for a win-win situation.

In the beginning Weintek first focused on selling HMI products on the domestic market under the brand name of **“EasyView,”** which symbolizes **“High Quality”** and **“Easy to Use.”** Considering the small market in Taiwan, the company started to aggressively expand its business operations on the overseas markets since 1997. With a rapid yearly growth of 40-60% in sales, Asia, Europe and North America gradually became the major markets for the company's sales. In 2001, we stretched our operation in China and reached a remarkable increase in sales. Now our products are in the leading position in the HMI sector in China. In 2004, **“Shenzhen Weintek Co., Ltd.”** was established to provide customers in China with efficient and superior service, conducting the promotion and marketing of our HMI products under a new brand name of **“WEINVIEW.”**

The value of technology is to meet people's needs. User-friendly, convenient and humanized products are definitely a trend from now on, and **WEINTEK** is a company to put this concept into practice



Products Profile

Screen Editor
EasyBuilder 500

The EasyBuilder 500 software is suitable for all MT500 Series products.

	MT505T	MT506T	MT508T	MT510T
Display	4.3" TFT	5.6" TFT	8" TFT	10.4" TFT
Color	256	256	256	256
Resolution	480 x 272	320 x 234	640 x 480	640 x 480
Flash Memory	2MB	2MB	4MB	4MB
Power Consumption	150mA @ 24VDC 300mA @ 12VDC	350mA@12VDC 200mA@24VDC	440mA@24VDC	440mA@24VDC
Operating Temperature	-10~45°C	-10~45°C	0~45°C	0~45°C

Touch Screen for Industrial Applications



Touch Screen for Industrial Applications

The MT500 series touch screen is the result of our continuous efforts to perfect our PLC touch screen products. Our accumulated knowledge in touch screen design has enabled us to produce these state-of-art touch screens, bringing out the PLC's full potential, and improving production line

■ High Reliable Touch Panel

The MT500 is equipped with touch panel of industrial grade. The highly reliable and rugged touch panel is critical for long term reliable operation.

■ Power by 32-bit RISC processor

Touch the screen and you can feel the power of the fastest RISC processor used in any touch screen on market. The MT500 offers high performance features for the industrial environment. Even the most complicated graphics can be called up in a snap.

■ Connect directly to most of the PLC on market

The MT500 supports direct communication with most PLCs. It is not necessary for the PLC to run any special programs for data communication. The available PLC drivers include:
AB, SIEMENS, OMRON, MITSUBISHI, KOYO, MODICON, GE FANUC, IDEC, TELEMECANIQUE, etc...



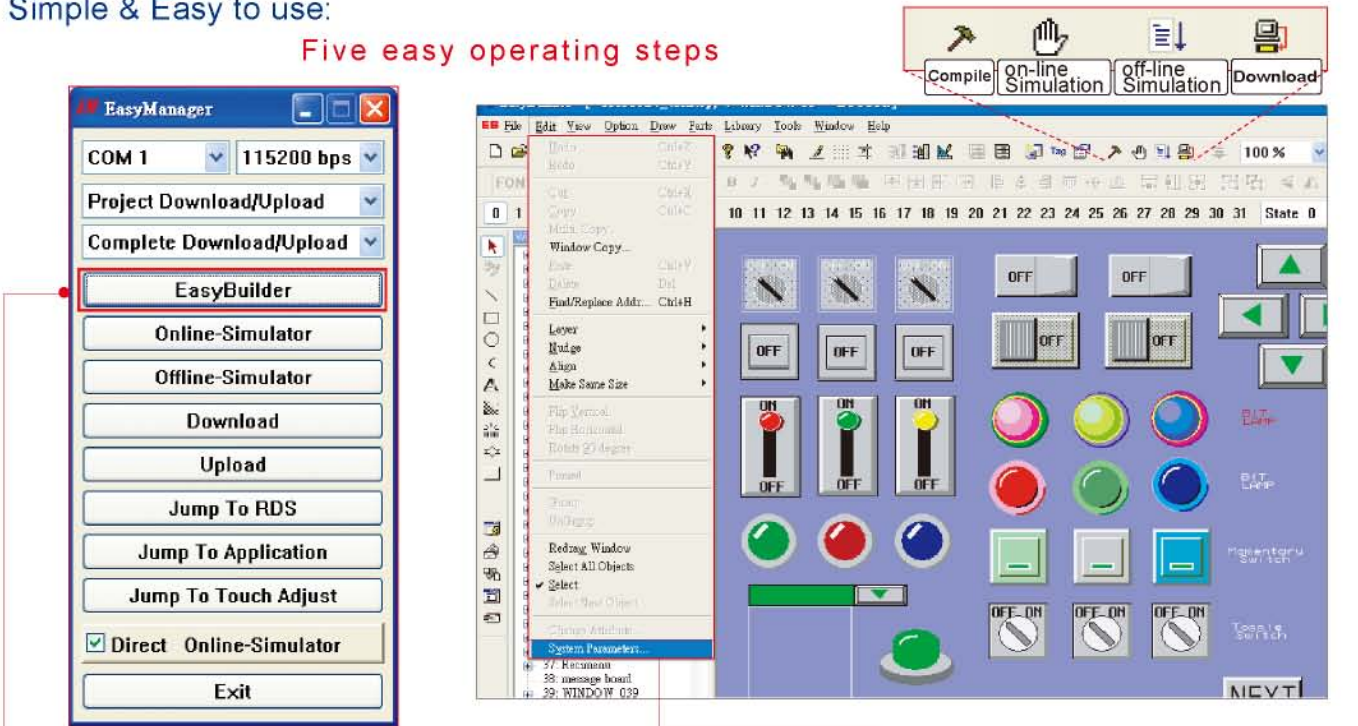
■ High contrast and high brightness LCD display supports 256 colors

The high-quality color displays support superior clarity and wide viewing angles. All models adopt TFT LCD. The MT500 supports high reliability as all the components have been carefully selected to fulfill the requirements of the modern industrial environment.



Simple & Easy to use:

Five easy operating steps



system setting

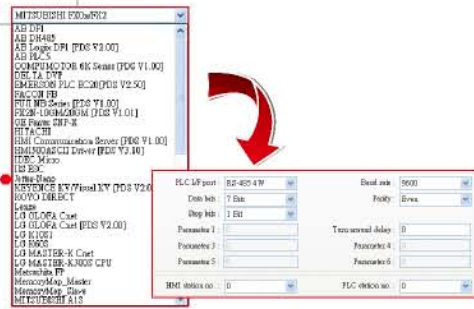
STEP 1 Start EasyBuilder 500

- Using EasyManager to start MT500 series edition software "EasyBuilder 500".
- Setting the baud rate & the number of COM port in the EasyManager.



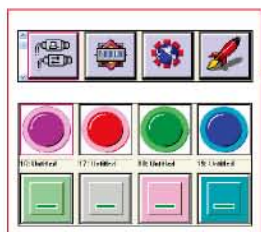
STEP 2 System Parameters Setting

- Selecting PLC type and setting communication parameters.
- EasyBuilder 500 can set communication parameters automatically by the PLC type.
- EasyBuilder 500 can easily install the new driver to support new PLC type.



STEP 3 Edit and Compile

Using EasyBuilder 500 to edit the window, then save and compile the project.




- Providing multi-functional objects.
- Providing prosperous Shape library and Bitmap library, and users also be able to create the Shape library and Bitmap library by themselves.
- Double bytes fonts support both Italics & Bold fonts and are also available for the Windows built-in fonts.
- The Windows Treebar provides quick access to Window properties and objects.
- Only double-click the object does an attribute Window appear for users to edit the object easily.
- Compile function will automatically detect the errors of the project.



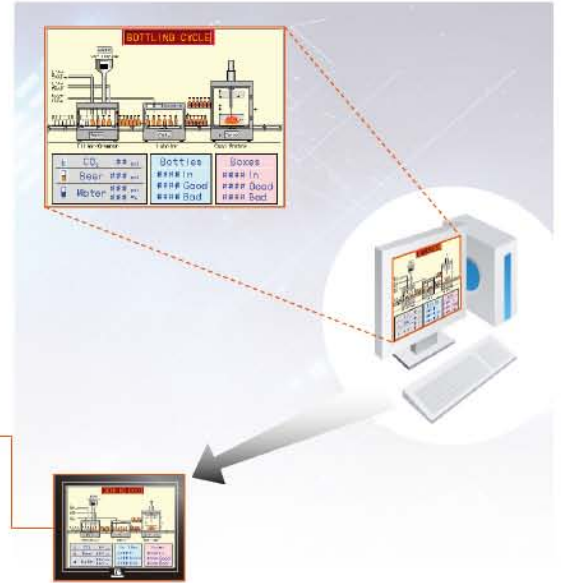
STEP 4 Offline Simulator

Simulate the MT500 HMI operations on PC without MT500 & PLC

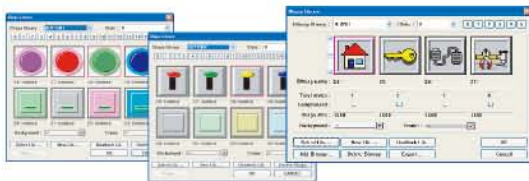
- The Offline Simulator simulates the operation of a project on the PC screen.
- Also can use Direct Online Simulator. The Simulator will directly retrieve the data from PLC.(10 minutes limit for the simulation.) 

STEP 5 Download

- Users can choose to download " Project " only to reduce the downloading time.
- The MT500 HMI can jump to the application mode automatically after downloaded.



Shapes and Editing

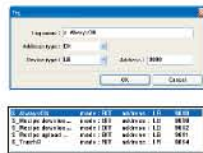


Shapes, Symbols and Editing

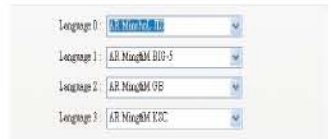
- || Providing prosperous Shape library and Bitmap library, including each kind of shape and symbol.
- || Users can design and modify shape library and bitmap library by themselves.
- || Available double bytes fonts choose the Windows built-in fonts and users can choose Fonts in Italics or Bold.

Tag

- || The Tag defines the device address where the HMI reads or writes data for the object. The Tag Library provides easy reference tags name and device address.
- || The Tag could be imported and exported via CSV format and using EXCEL to edit.



Multi-Language



- || Every project can select one single-byte font (English and European languages) or one double-bytes font (Simplified Chinese, Traditional Chinese, Korean Japanese or by using Windows fonts library). You can develop an application in 4 different languages simultaneously.
- || Using UNICODE version of EasyBuilder 500 could be allowed show different double bytes characters on screen simultaneously. For example: Display the Japanese, Korean, Simplified Chinese and Traditional Chinese.
- || Users can use Label library to edit multi-language by EXCEL, also it can import or export by CSV format.

Support Portrait Display Mode

- || Change the screen direction to vertical display and fit the control panel space



Macro

The Macro function is a VB Script like language.

- || Macro function provides a special feature that enables users to create a program to execute function.
- || Macro support sub-macro function.

```
Macro_Command main( )
int acuity_packet
bool off = 0

SetData(off, LB_Bin, 0#15, 1)
GetData(acuity_packet, LV_Binpic, 0#00, 2)
SetData(acuity_packet, LV_Binpic, 0#00, 2)
End Macro_Command
```

Software Features

Powerful Simulator

Offline Simulator

- Simulate the MT500 HMI operation on PC without MT500 HMI and PLC.



Online Simulator

- Simulate the MT500 operation on PC with both MT500 HMI and PLC. The Simulation will retrieve the data from PLC through MT500 HMI and simulate MT500 operation.



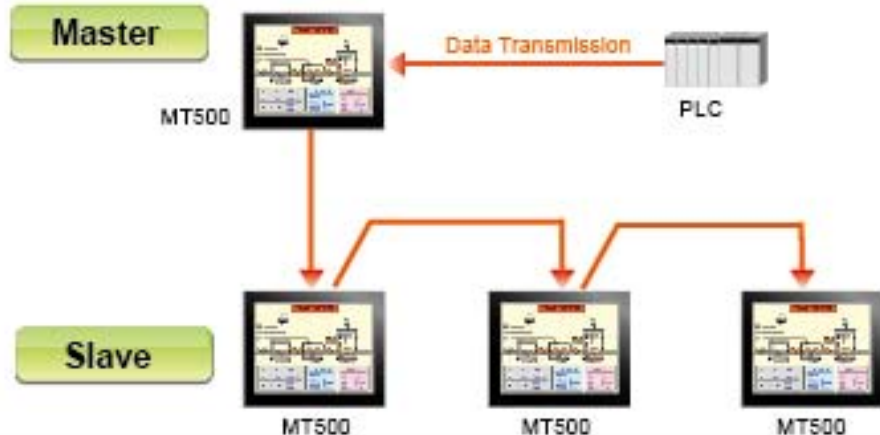
Direct Online Simulator

- Simulate the MT500 operation on PC only with PLC. The Simulation will directly retrieve the data from PLC. (10-minute limit for Direct Online Simulation)



Master-Slave Communication Capability

- All the MT500s are connected one by one and the first one connects with the PLC.
- The MT500 now is able to support master-slave communication feature for every PLC it supports.



MT505T-Compact Design , Powerful Performance.

MT505T



FEATURES

-  **Powerful & Efficient**
-  **Beautiful & Clear**
-  **Economical & Handy**
-  **Compact & Exquisite**

Hardware Specifications

Picture



MT510T



MT508T



MT506T



MT505T

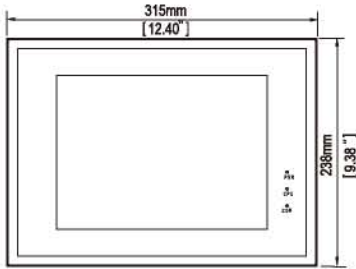
Display	10.4" TFT	8" TFT	5.6" TFT	4.3" TFT
Brightness	400 cd/m ²	400 cd/m ²	300 cd/m ²	320 cd/m ²
Color	256 color	256 color	256 color	256 color
Contrast Ratio	300:1	250:1	300:1	400:1
Resolution(WxH)	640 x 480	640 x 480	320 x 234	480 x 272
Back Light	CCFL X 2	CCFL X 1	LED	LED
CCFL Life time(avg.)	40,000 hr	50,000 hr	30,000 hr	30,000 hr
Touch Panel	4 wires resistive type			
Touch Accuracy	2mm		1.5mm	
Surface Hardness	4H			
Serial Interface	PC(RS-232), PLC(RS232/485)			
AUX port	AUX(RS-232/RS485 2-wire)		AUX(RS-232)	N/A
Ethernet port	N/A			
Processor	32 bit RISC CPU 200 MHz			
Flash Memory	4MB		2MB	
Recipe Memory	128 KB			N/A
RTC	Yes	Yes	Yes	N/A
Parallel Printer port	Yes	Yes	N/A	N/A
System Diagnostic	Power failure detection			
Input Power	24 VDC ± 5%		12~24VDC	12~28VDC
Power Consumption	440mA@24VDC	440mA@24VDC	350mA@12VDC 200mA@24VDC	300mA@12VDC 150mA@24VDC
Dimensions WxHxD	315 x 238 x 62 mm	231 x 176 x 55mm	204 x 150 x 48mm	128 x 102 x 38mm
Panel Cutout WxH	302 x 225 mm	222 x 167 mm	192 x 138 mm	119 x 93 mm
Weight	about 2.0kg	about 1.2kg	about 0.84 kg	about 0.3 kg

General Specification

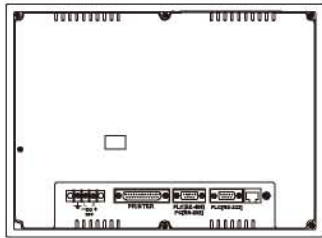
CE	Complies with EN50081-2 and EN50082-2 standards	
FCC	Complies with FCC Class A	
Voltage Resistance	500VAC (1 min.)	
Isolation Resistance	Exceed 50MΩ at 500VDC	
Vibration Endurance	10 to 25 Hz (X,Y,Z direction 2G 30minutes)	
Protection Structure	IP65 front panel (O ring seal)	
Storage Temperature	-20~60°C	-30~70°C
Operating Temperature	0~45°C	-10~45°C
Operation Humidity	10~90%RH	
Enclosure	Plastic	

Products Dimension

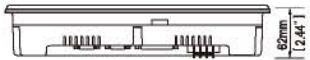
MT510T



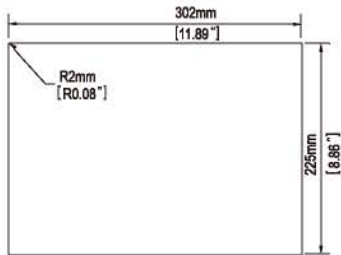
Front View



Rear View

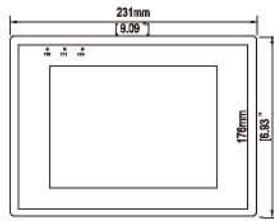


Bottom View

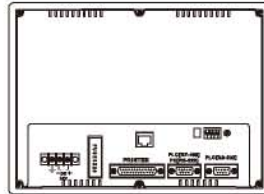


Panel cutout

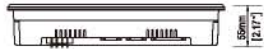
MT508T



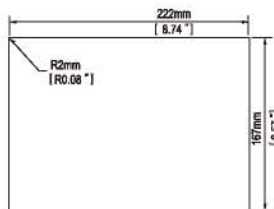
Front View



Rear View

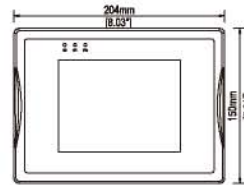


Bottom View

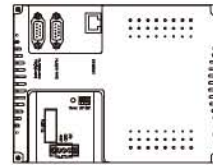


Panel cutout

MT506T



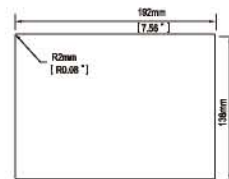
Front View



Rear View

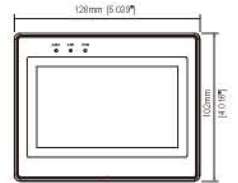


Bottom View

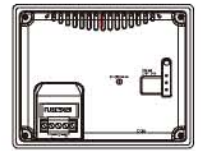


Panel cutout

MT505T



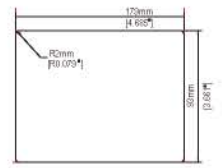
Front View



Rear View



Bottom View



Panel cutout



MT5-PC Cable
PC to MT download cable



Accessories

PS505 : MT505 Protective Sheet

PS506 : MT506 Protective Sheet

PS508 : MT508 Protective Sheet

PS510 : MT510 Protective Sheet



MT5-FX2N-3M Cable
Mitsubishi FX series



MT5-AnS Cable
Mitsubishi AnS series



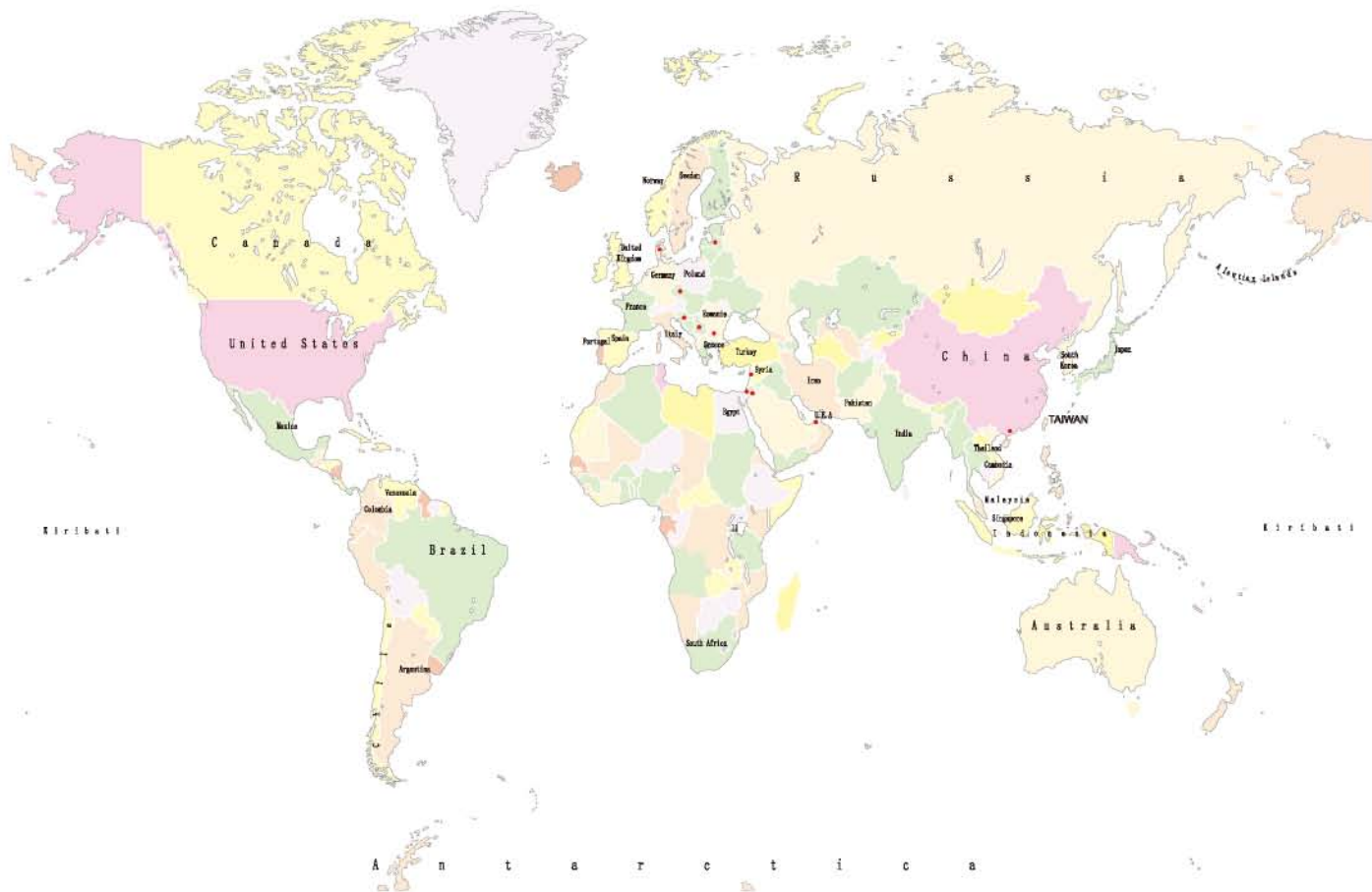
MT5-MPI Cable
Siemens S7-300

Support PLC Type

AB MicroLogix (DF1 Protocol)
AB SLC500 (DF1, DH485)
AB PLC5 (DF1 Protocol)
AB CompactLogix, FlexLogix
(AB Logix DF1)
Compumotor (Parker) 6K
Motion Controllors
Delta DVP
Emerson EC20 Series
Facon FB, FBs
Fuji NB Series
GE Fanuc Micro, 90-30
Series (GE SNP-X Protocol)
General GNP-CPU
Hitachi H Series
Idec Mirco3
IIS Emerald EMC-2000
INVT CHV/CHE Inverter
Jetter Nano

Keyence KV Series
Koyo Direct Logic Series (K-sequence)
Lenze 9300/8200
LG Glofa Cnet
LG Master K Cnet
LIYAN E
Matsushita (NAIS) FP
Mitsubishi AJ71 Communication Module
Mitsubishi FX Series
Mitsubishi A Series
Mitsubishi Q00/Q01 CPU, QJ71 Com-
munication Module(QJ71)
Mitsubishi J2-S100(MR-J2-10C)
Mitsubishi 232/485 BD
Mitsubishi FX2N-10GM/20GM
Modicon PLC (Modbus RTU)
Modicon TSX Micro, Nano, Neza
Series (UnitelWay)
OMRON CPM, CQM Series (Host Link)

OMRON C200H/HS/ALPHA
Series (Host Link)
OMRON CP1H, CJ1, CS1 Series
OMRON E5CN Series
SAIA PCD Series
SamSung SPC-10
Sharp JW Series
Siemens S7/200
Siemens S7/300
Siemens TI505 Series
Taian TP02 Series
Telemecanique Twido (Modbus
RTU)
Toshiba T Series
VIGOR M/V/VB Series
Yokogawa FA-M3 Series



WEINTEK

WEINTEK LABS.,INC.

Taipei

Address: 3F, 910 Chung Cheng Rd. Chung Ho city, Taiwan

Tel : (886)2-22286770

Fax : (886)2-22286771

Website : <http://www.weintek.com> <http://www.weinview.cn>

Sales: salesmail@weintek.com

ProductSupport: servicemail@weintek.com